

INSTALLATION INSTRUCTIONS

EQUIPMENT REQUIRED: UTILITY KNIFE
 WIRING ACCESS LOCATION: SUV3, SUV4
 DRILL BITS:

WRENCHES: (TIGHTEN ALL FASTENERS WITH TORQUE WRENCH) 8MM, 13MM, 17MM, T50, T55

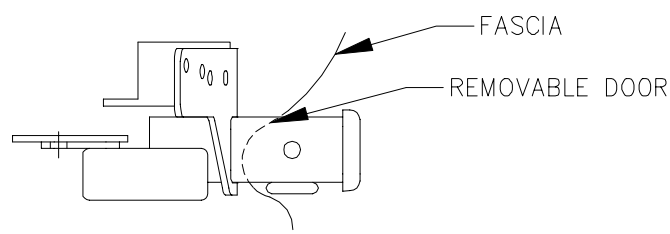
VEHICLE	HITCH NO.
BMW X5	75113

(REQUIRES REMOVAL OR TRIMMING OF FASCIA DOOR)

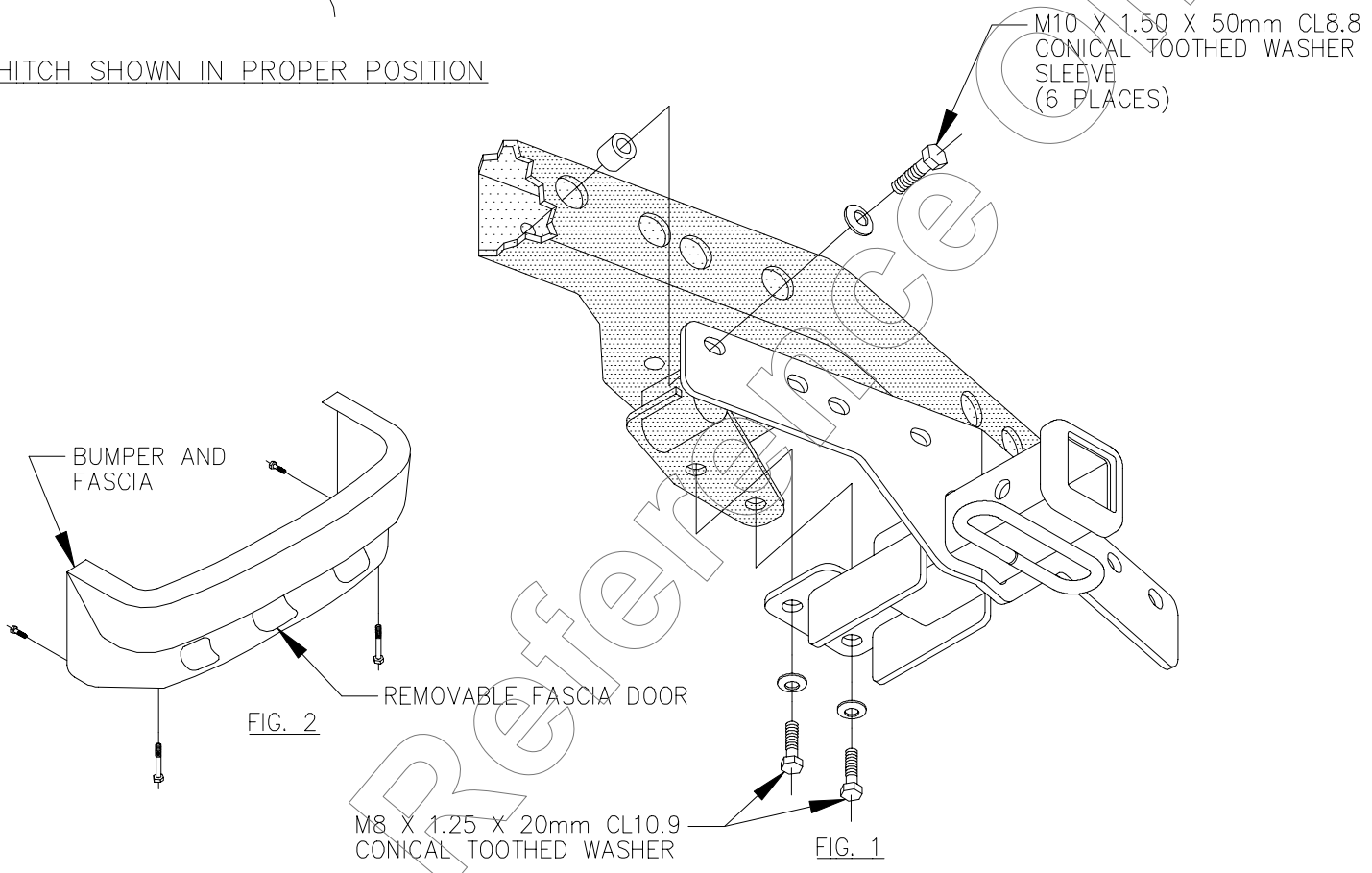
DO NOT EXCEED LOWER OF TOWING VEHICLE MFR'S RATINGS OR

HITCH TYPE ▼	MAX GROSS TRLR WT(LB)	MAX TONGUE WT(LB)
WEIGHT CARRYING BALL MOUNT	6000	600

DO NOT USE WITH WEIGHT-DISTRIBUTING (SPRING BAR TYPE) HITCH.



HITCH SHOWN IN PROPER POSITION



1. REMOVE BUMPER AND FASCIA BY REMOVING THE 4 FASTENERS AS SHOWN IN FIGURE 2.
2. REMOVE THE SIX (6) EXISTING M10 FASTENERS AND THE TWO (2) EXISTING M8 FASTENERS AND RETURN TO VEHICLE OWNER.
3. RAISE HITCH INTO POSITION AND INSTALL REMAINING FASTENERS AS SHOWN IN FIGURE 1.
4. REATTACH BUMPER AND FASCIA.
5. THE FASCIA DOOR CAN BE RETURNED TO THE VEHICLE OWNER OR TRIMMED PER THE TEMPLATE AND REINSTALLED. NOTE: GET VEHICLE OWNER APPROVAL BEFORE TRIMMING FASCIA DOOR.

TIGHTEN ALL M10 CLASS 8.8 FASTENERS TO 38 LB-FT.
 TIGHTEN ALL M8 CLASS 10.9 FASTENERS TO 25 LB-FT.

THIS PRODUCT COMPLIES WITH SAFETY SPECIFICATIONS AND REQUIREMENTS FOR CONNECTING DEVICES AND TOWING SYSTEMS OF THE STATE OF NEW YORK AND V.E.S.C. REGULATION V-5.

APPROX WEIGHT (LB.)	FASTENER KIT NO.
15	F75113

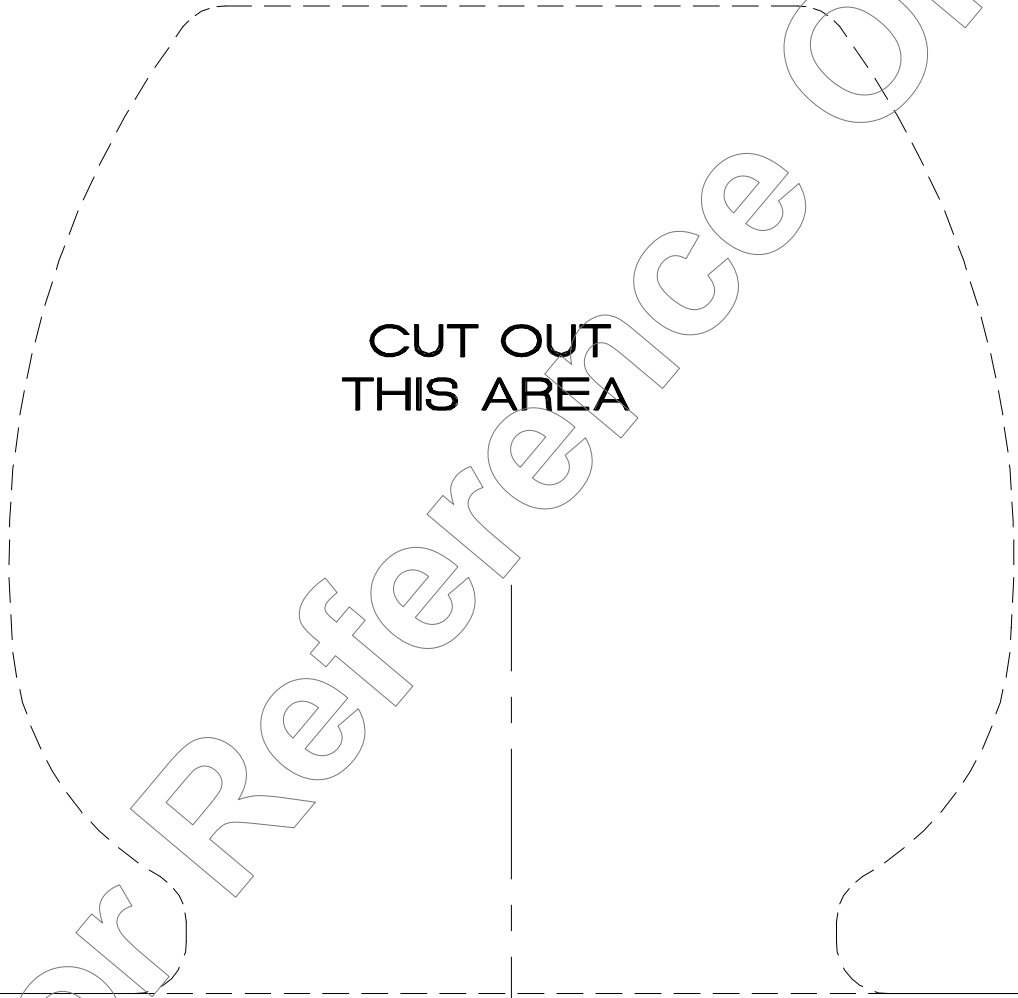
NOTE: Check hitch frequently, making sure all fasteners and ball are properly tightened. If hitch is removed, plug all holes in trunk pan or other body panels to prevent entry of water and exhaust fumes. A hitch or ball which has been damaged should be removed and replaced. Observe safety precautions when working beneath a vehicle and wear eye protection. Follow car maker's specs for maximum trailer weight and tongue weight. Do not cut access or attachment holes with a torch.



INSTALLATION INSTRUCTIONS

VEHICLE	HITCH NO.
BMW X5	75113

TOP



CUT OUT THIS AREA

For Reference Only

TEMPLATE

* THIS TEMPLATE IS FULL SCALE.
DO NOT REDUCE SIZE.

THIS PRODUCT COMPLIES WITH SAFETY SPECIFICATIONS AND REQUIREMENTS FOR CONNECTING DEVICES AND TOWING SYSTEMS OF THE STATE OF NEW YORK AND V.E.S.C. REGULATION V-5.

APPROX WEIGHT (LB.)	15	FASTENER KIT NO.	F75113
---------------------	----	------------------	--------

NOTE: Check hitch frequently, making sure all fasteners and ball are properly tightened. If hitch is removed, plug all holes in trunk pan or other body panels to prevent entry of water and exhaust fumes. A hitch or ball which has been damaged should be removed and replaced. Observe safety precautions when working beneath a vehicle and wear eye protection. Follow car maker's specs for maximum trailer weight and tongue weight. Do not cut access or attachment holes with a torch.

